



2026 Open House

7 May 2026



This session will be recorded and uploaded on our school's YouTube site.

The PowerPoint slides will be uploaded on our school website.

Please type your questions in the Chat and our team will try to answer them while the presentation is going on.



Introduction



MDM CHAN YEE CHIN WILNA
VICE-PRINCIPAL



MR CHEN ZHONGYI
PRINCIPAL



MR HAMRI BIN A JALIL
VICE PRINCIPAL ADMIN

Admiralty Primary School

Nurture Compassionate Citizens & Life-long Learners



Key Objectives



- To help you in your decision-making on the choice of school for your child; and
- To share what Admiralty Primary School has to offer in primary school education



Presentation Outline



- 1. Preparing your child for Primary School**
- 2. Holistic Education @ ADPS**
- 3. Forging Strong Home-School Partnerships**



Preparing your Child for Primary School

Admiralty Primary School
Nurture Compassionate Citizens & Life-long Learners



Do We Remember our own First Day in Primary School? 😊



How do you help your child transit from pre-school to primary school?



Admiralty Primary School
Nurture Compassionate Citizens & Life-long Learners



How do you help your child transit from pre-school to primary school?

There are many things that we can do to help our children prepare for this transition!

- Our primary schools are much bigger than the preschool that your child is currently in.
- Bigger class sizes – usually 30 students in each P1 and P2 class.
- Classrooms are not air-conditioned.
- Our students – being at the primary level now – are expected to gradually become more independent and self-directed in their learning.
- Different school routine: all to report to school for flag raising and pledge taking @ 7.30am (for most schools); time-table will run till 2.10pm for Admiralty Primary School.



How do you help your child transit from pre-school to primary school?

Before joining the school...

- **To understand more about the new environment.**
 - Take your child to the school's e- or F2F Orientation
 - Show your child pictures of the school.
 - Check out the school's website together with your child.
 - Allow your child to talk to other children in the school of your choice.
- **To understand new rules.**
 - Help your child understand and adhere to school and class rules via the school's Student Handbook/Companion Book.
- **To get help in school.**
 - Assure your child that the teachers will help should he/she encounter any problems – encourage him/her to seek help in school.



How do you help your child transit from pre-school to primary school?

After joining the school...

- **To build new relationships**
 - Talk to your child about making new friends and interacting with the teachers.
 - Help your child appreciate diversity and accept differences.
- **To start a new routine and timetable.**
 - Attune your child to the longer schooling hours.
 - Talk to your child about schooling daily such as getting ready for school, playing with peers, what your child has learnt in school, and setting up a routine for homework.
 - Show your child how to pack their school bag for the day and help your child adapt to this daily routine.



The Best Gift for our Children



If parents want to give their children a gift, the best thing they can do is to teach their children to love challenges, be intrigued by mistakes, enjoy effort, and keep learning. That way, their children don't have to be slaves of praise. They will have a lifelong way to build and repair their own confidence.

Carol Dweck (Author of “Mindset”)

How to choose a primary school



Questions to be addressed during this session

- Why choosing the right primary school matters?
- What are the factors to consider when choosing a school for your child?
- What are the phases of primary school registration?
- How do you help your child transit from pre-school to primary school?



Why choosing the right primary school matters?

- Choice of primary school should not be solely made based on brand name, popularity or results of the school.
- It requires more deliberate decision based on the following factors:
 - Distance from Home
 - Availability of Student Care Centre Onsite/Near the School
 - Understanding School Culture in relation to Family Values & Child's Interest
 - Quality of Teaching & Learning of the school
 - Co-ed versus Non Co-ed



What are some factors to consider when choosing a school?

- **Distance from Home**
 - Most schools start at 7.30am and the ending time might differ for schools. Importantly, it must agree with family routine.
 - Extended travel time will affect your child's rest time.
 - Those on school bus may have to wake up as early as 6.00am and may only be dropped off at home at 2.30pm as school dismissal is usually at 1.30pm for most schools.
 - Longer hours in school due to CCAs, extra classes, etc., is to be expected when your child is in P3 - P6.
 - Many schools have more than usual heavy traffic situation in the morning and during dismissal.
 - It is important for your child to report to school punctually.
- **Availability of Student Care Onsite/Near the School**
 - Student care provides your child with a safe and convenient environment to rest, have their meals, and learn after school hours.



What are some factors to consider when choosing a school?

- **Understanding the School Culture in relation to your Family Values**
 - Balanced and holistic education – both academics and non-acad
 - Character Building Emphasis
 - Special/Unique School-based Programmes
 - Clan & Faith-based schools
 - Special Assistance Plan School
 - School's Approach to Discipline



What are some factors to consider when choosing a school?

- **Understanding the School Culture in relation to Your Child's Interest**
 - Whether the school provides opportunities for your children to develop their interests beyond the classroom
 - Shortlist schools with CCAs aligned to your child's interest
 - CCAs that allow your child to acquire new skills and hone character-building qualities like team spirit, perseverance and tenacity



What are some factors to consider when choosing a school?

- **Choosing a Primary School: Co-ed versus Non Co-ed Schools**
 - Being in a co-ed school helps your child get prepared for the real world where both genders have to mingle and interact.
 - If you have children of different genders, choosing a co-ed primary school saves you the hassle of having to go through the P1 Registration all over again.
 - Your child will get the priority in Phase 1 with a sibling studying in the same school.



Understanding P1 Registration & its Requirements



Phases of P1 Registration

For the 2026 P1 Registration Exercise, your child must be a Singapore Citizen or Permanent Resident born between 2 January 2020 and 1 January 2021 (both dates inclusive).

Phase 1

For a child who has a sibling studying in the primary school.

Phase 2A

For a child:

- Whose parent or sibling is a former student of the primary school, including those who have joined the alumni association of the primary school as a member.
- Whose parent is a member of School Advisory or Management Committee.
- Whose parent is a staff member of the primary school.
- From the MOE Kindergarten under the purview of and located within the primary school.



Phases of P1 Registration

Phase 2B

For a child:

- Whose parent has joined the primary school as a parent volunteer.
- Whose parent is a member endorsed by the church or clan directly connected with the primary school.
- Whose parent is endorsed as an active community leader.

Phase 2C

For a child who is not yet registered in a primary school.



Phases of P1 Registration

Phase 2C Supplementary

For a child who is not yet registered in a primary school after Phase 2C.

Phase 3

For international students



Trend of P1 Intake for Admiralty Primary School

	2022	2023	2024	2025
Vacancies	210	210	210	210
Phase 1	106	75	82	90
Phase 2A	37	32	34	42
Phase 2B	22	33	31	26
Phase 2C	45	70	69	52

Address used for P1 Registration

- Parents' official residential address as reflected on NRIC
- Caregiver living 2km: Make a statutory declaration (online) of alternative care arrangement.
 - You and your spouse are both working full-time at the time the declaration is made
 - Your child is under care of a grandparent or a parent's sibling

If caregiver's address is **within 2km** of the school, your child will be balloted with those of the same citizenship living between 1km to 2km of school regardless of proximity of caregiver's address from the school.

If caregiver's address is **outside 2km** from the school, your child will be balloted with those of the same citizenship living outside 2km of from the school.



30-month Stay Requirement

A child who gains priority admission through their distance category is required to reside at the address used for registration for **at least 30 months** from the start of the P1 Registration Exercise.

In cases where the 30-month stay requirement is not met, MOE will transfer the child to another school with vacancies, as the priority admission to the first school was based on the declared address used for registration.



Order of Priority Admission

With effect from 2012 P1 Registration Exercise, Singapore Citizens (SCs) child are given absolute priority over Permanent Residents (PRs) when balloting is required.

If the number of applicants within each category exceeds the number of vacancies in the a phase, balloting will be conducted according to home-school distance at MOE HQ:

1. SCs living within 1km of the school
2. SCs living between 1km to 2km of the school
3. SCs living outside 2km of the school
4. PRs living within 1km of the school
5. PRs living between 1km to 2km of the school
6. PRs living outside 2km of the school



Balloting: Scenarios

For Phase 2B, School A has **20 P1 vacancies** and **25 children** have registered through the P1 registration Exercise. Of the 25 children, their parents are:

- 20 Parent Volunteers
- 5 Active Community Leaders

Home-School Distance	Singapore Citizen (SC)	Permanent Residents (PR)
< 1km	10	2
Between 1km and 2km	13	0
> 2km	0	0
Total Registrant	23	2



Balloting: Scenarios (Outcome)

- 10 SC living within 1km of the school will gain priority admission
- 13 SC living between 1km and 2km of the school require balloting
- 2 PR living within 1km of the school will be unsuccessful

Home-School Distance	Singapore Citizen (SC)	Permanent Residents (PR)
< 1km	10 (admitted)	2 (unsuccessful)
Between 1km and 2km	10 (admitted) 3 (unsuccessful)	0
> 2km	0	0
Total Registrant	23	2

You can explore schools based on their distance to your via this link:

<https://www.moe.gov.sg/schoolfinder>



Holistic Education @ ADPS

Admiralty Primary School
Nurture Compassionate Citizens & Life-long Learners





Vision:

**Inspiring and empathetic leaders
with a strong global outlook**

Mission:

**Nurture Compassionate Citizens and
Life-long Learners**

School Theme for ADPS

Growing Together: Gratitude, Courage, Excellence



Gratitude

- An attitude of gratitude
- Gratitude as a foundation of building **empathy** and **compassion**



Courage

- It's not about being fearless; we all have our fears! It's how we **overcome** our fear(s)
- Having the courage to embark on a **lifelong** journey of **learning**



Excellence

- Excellence as a “habit” and journey, not a destination
- Dream big, start small

Our School Values:



Be **G**racious and kind towards others

Be **R**esponsible for my actions, work and belongings

Have **I**ntegrity and be honest – own up to my mistakes and grow from there!

Be a good **T**eam player – teamwork makes the dream work!

GRIT – have grit and perseverance, for Excellence!

Strategic Thrust 1:

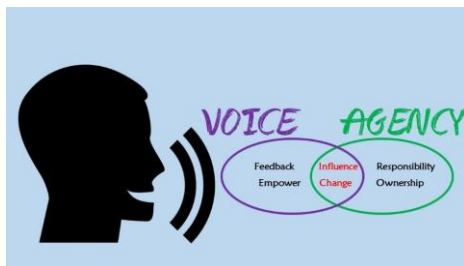
Developing Future Leaders with a Global Outlook

SO1.1: Enhance Students' Voice, Agency and Advocacy through Ownership, Empowerment and Collective Responsibility

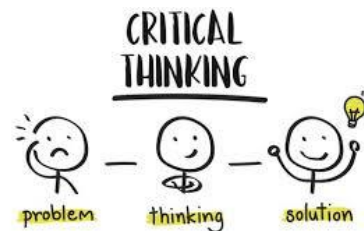
SO1.2: Think Global, Act Local

SO1.3: Develop Critical Thinkers who are able to Solve Complex Problems

SO1.4: Cultivate Skilful and Confident Communicators



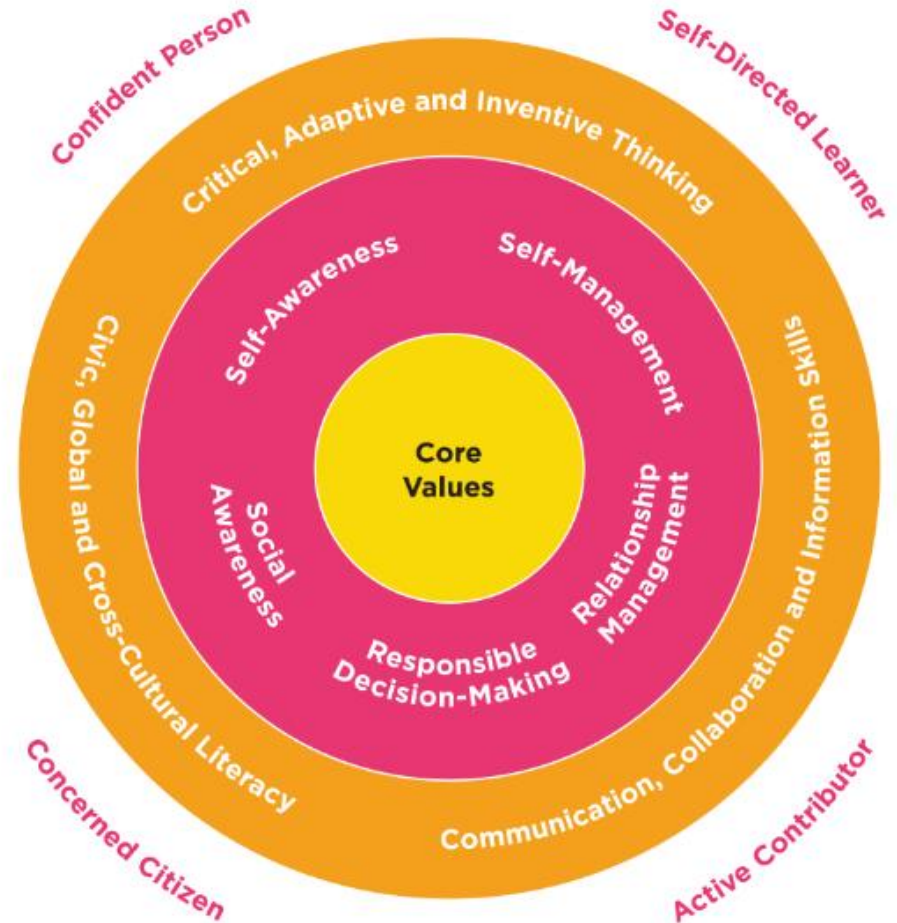
think
GLOBALLY,
act
LOCALLY



Developing our Admirals Holistically

Achieving Alongside our Admirals

- Critical to inculcate 21 Century Competencies in our Admirals
- Ultimately, want each Admiral to be a:
 - Confident person
 - Self-directed learner
 - Concerned citizen
 - Active contributor



<https://www.moe.gov.sg/education-in-sg/21st-century-competencies>

Healthy and Meaningful Use of EdTech

- Never let our children become “slaves of tech” – always remain in control and use tech meaningfully and for learning
- Set boundaries and monitor closely
- Tech as a useful **enabler** for teaching and learning, but we cannot outsource THINKING to Tech!
- We should embrace the use of tech, but always be mindful of the dangers of overuse and the lack of monitoring

WHAT IS AGE-APPROPRIATE USE OF AI?

Schools are given guidance on the age-appropriate use of AI. These guidelines are informed by learning sciences.

P1 to P3

Concrete, hands-on learning experiences, and social interactions should be prioritised to allow students to build foundational knowledge, cognitive and social skills, and human relationships.

- *Direct use of AI tools by students is not advisable as students may not be able to discern the output and may mistake AI as human*

P4 to P6

The use of AI could be **gradually introduced to students** under the guidance of teachers.

- *When using chatbots, students should be supervised and guided to discern the output as they develop in their ability to be safe and responsible users of AI*

Sec

There should be a gradual release of responsibility to **allow for independent use of AI**, so that students learn to use AI to support learning while **not over-relying on it**.

- *Students will be given opportunities to reflect on their use of AI so that they develop into confident and ethical AI users*

Pre-U

As **students become more empowered to use AI as a collaborator**, emphasis on the use of AI in a **safe, responsible, and ethical** manner continues.

- *Students will be given opportunities to innovate with AI and reflect on their use to guard against misuse of AI*

Co-Curricular Activities (CCA)

Performing Arts	Uniform Groups	Club & Societies	Sports
Choir	Brownies	English Language & Drama Club	Sports Club
Chinese Dance	Scouts	Design & Innovation	Football
Indian Dance		Infocomm Technology	Rope-Skipping
Malay Dance		Visual Arts Club	Track & Field
Guitar Ensemble			Wushu
Guzheng Ensemble			

- Common CCA time on Mondays from 7.40am to 9.30am (**Pri 1 – 2 students report to school at 9.30am on Mondays**)
- Only Pri 3 to 6 students need to attend CCAs
- Enrichment classes for Pri 1 and 2 students available on Mondays (7.30am-9.30am) - Payable by parents to vendor

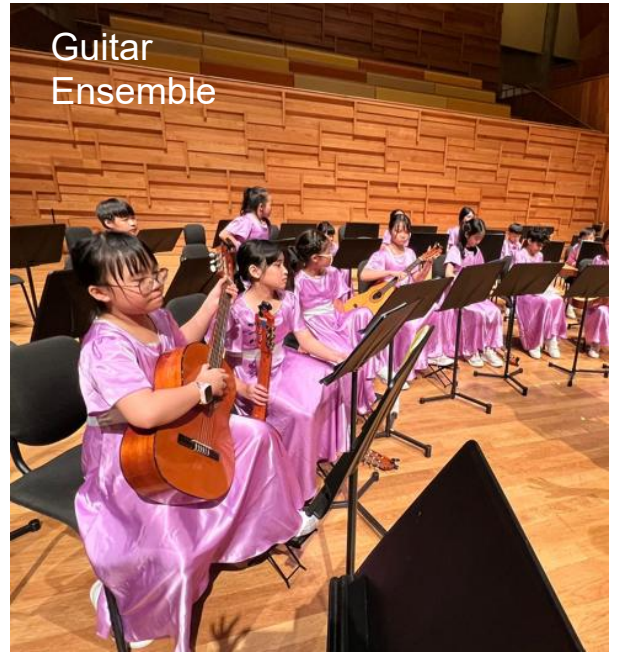




Choir



Guzheng



Guitar Ensemble



Indian Dance



Chinese & Malay Dance

Performing Arts



Brownies



100th World Thinking Day, 22 February 2026



Scouts

Children's Day Carnival @ Woodlands Crescent Park 27 September 2025



Uniform Groups



Rope Skipping



Football



Track & Field



Wushu



Tchoukball

Sports

English Language & Drama Club



Design & Innovation



InfoComm



Visual Arts & Photography



Clubs & Societies

Acad and DSA Performance of our P6s over the years

- Maintained high % of students eligible for Posting Grp 3 (previously Express stream + option Band) – 69.4%
- No. of DSA applications and successful DSA outcomes remain steady and at a healthy level

Year	Posting Grp 3 (& Option Grp 2 or 3); AL 4 – 22	Posting Grp 2 (& Option Grp 1 or 2); AL 23 – 25	Posting Grp 1 AL 26 – 30
2025	69.4%	17.8%	11.4%
2024	69.2%	20.2%	9.1%
2023	70.8%	17.2%	10.5%

- 2025 – 29 (7 students chose not to exercise their DSA)
- 2024 – 27 (14 students chose not to exercise their DSA)
- 2023 – 44 (3 students chose not to exercise their DSA)
- 2022 – 33
- 2021 – 21

Forging Strong Home-School Partnership

Admiralty Primary School
Nurture Compassionate Citizens & Life-long Learners



Growing a supportive community with, and for, our Admirals:

- Teachers and parents working closely to better understand our children's strengths, areas for growth, affirmations, concerns
- Mutual reinforcement of right habits and routines in school and home
- Starting each day right & with the right values – **punctuality**, reading widely and critically (Mon-Wed, EL book; Thurs-Fri; MTL book)
- Cultivating the habit of reading in school and at home e.g. “print-rich” environment, role-modelling reading behaviours
- **Reiterating and Reinforcing our school's values: G.R.I.T.**

A “We-First” Mentality: “It takes a village to raise a child”



- Our Admirals thrive and flourish when they learn alongside one another (not just by themselves!)
- Admirals to be kind in their words, actions and deeds while we constantly look out for others
- “Remember there’s no such thing as a small act of kindness. Every act creates a ripple effect with no logical end.”
- Let’s role model for our children!
- **Grow our Admirals into empathetic and inspiring leaders who are not self-centred.**

Other Considerations



Daily Schedule

Level	Day	Reporting Time	Dismissal Time
Pri 1 & 2	Monday	9.30am	2.10pm
	Tuesday - Friday	7.30am	2.10pm
Pri 3 – 6	Monday	7.30am	2.10pm
	Tuesday - Friday		2.10pm

- Those on school bus may have to wake up as early as 0600 and may only be dropped off between 1500 and 1530 depending on the day of the week.
- Longer hours in school, from Tuesday to Friday, due to CCAs, extra classes, etc., is to be expected when your child is in P3 - P6.
- At times, the school/level will have activities and programmes that Admirals are expected to participate in – important for their holistic development. Do prioritise these over other activities and programmes that you have arranged for your child outside of school.
- All Admirals are expected to be punctual for school and lessons.



Student Care

- Student care provides your child with a safe and convenient environment to rest, have their meals, and learn after school hours.
- The following are the Student Care Centres onsite/near the school.
 - The Learning Harbour (@ Admiralty Primary School)
 - Ascenda Educare Centre (Blk 702 / 8338 8786)
 - Care Corner (Blk 719 / 6365 1075)
 - Pro-Teach (Blk 710 / 6363 6325)
 - Edu First (Blk 729 / 6612 8785)
 - Oasis Student (31 Woodlands Close / 8043 6057 / 6951 1355)
 - Graceland (Blk 768 / 8686 0083)
 - Learning Max (Blk 768 / 6368 0488)



School Bus Arrangements

Bus Fare Period: 1 Jan 2025 to 31 Dec 2026

Distance Range Category	1-Way	2-Way
Up to 2km	\$149	\$175
> 2-4km	\$166	\$195



Thank you!

Admiralty Primary School

Nurture Compassionate Citizens & Life-long Learners

